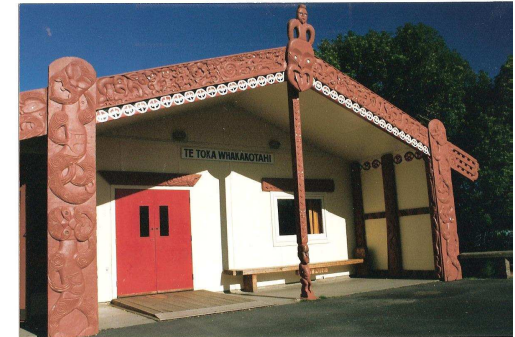


TE TOKA WHAKAKOTAHI
BAY OF ISLANDS COLLEGE
KAWAKAWA



COMPLEX

MA1 - WHARENUI
"Te Toka Whakakotahi"

MA2 - WHAREKAI
Dining Room /Teaching Space

MA3 - CLASSROOM
Teaching Space

We **WELCOME** Guests and Visitors to our Marae and ask that you look after it and enjoy your stay here.

No reira, nau mai, piki mai, haere mai.

**TE TOKA WHAKAKOTAHI
 MARAE**

1 – 9 Derrick Road
 PO Box 58
 Kawakawa 0243
 BAY OF ISLANDS

***Please contact in
 the first instance***

Edith Painting-Davis
 Head of Maori Department
 BAY OF ISLANDS COLLEGE

**A/Hrs (09) 4040210
 021 02254448**

**Tel (09) 404 1055
 Fax (09) 404 1048**

MARAE HIREAGE COSTS

Day Hire: \$ 50.00

Overnight Hire: \$ 12.00 Per person
Per night

There is a flat hire fee for persons of all ages of \$12 per person, per night. This includes the use of linen.

The minimum overnight hire is \$100

Bond: \$100.00

The bond is required to secure your booking. This must be received at least two weeks prior to your arrival.

On arrival and departure an equipment check will be made.

Full Payment: This must be made prior to departure.

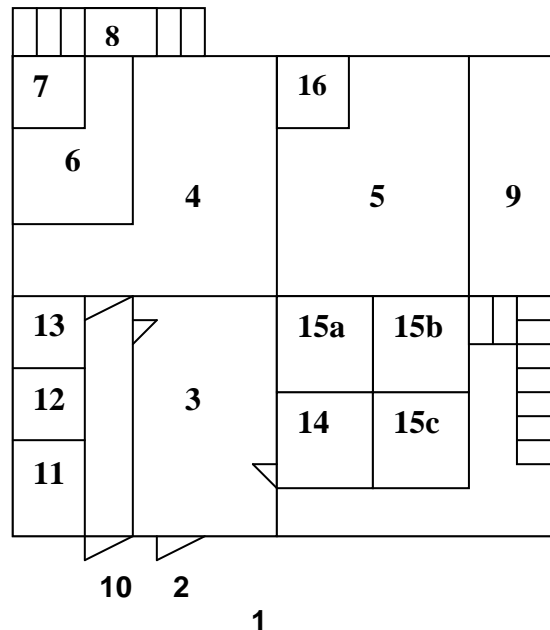
NO EXCEPTIONS

**TE TOKA WHAKAKOTAHI
MARAE**

**is a non-alcohol and
No smoking environment.**

**Please refrain from parking
directly in front of the Marae area.**

MARAE LAY-OUT



MARAE COMPLEX CODE

- 1 **PARKING**
- 2 **MARAE ATEA** (Front of Complex)
- 3 **WHARENUI** (Main House)
- 4 **WHAREKAI** (Dining Room)
- 5 **CLASSROOM**
- 6 **KITCHEN**
- 7 **WALK IN CHILLER**
- 8 **REAR EXIT**
- 9 **BALCONY EXIT**
- 10 **CORRIDOR ENTRY / EXIT**
- 11 **MENS W.C & SHOWERS**
- 12 **DISABLED W.C. & SHOWER**
- 13 **LADIES W.C. & SHOWERS**
- 14 **MATTRESS STORAGE**
- 15 **MAORI DEPARTMENT OFFICES**
(15 a, b, c)
- 16 **TELEVISION & VIDEO**

MARAE FACILITIES

- ▶ **One Main Sleeping House**
Sleeps approximately 60 people
- ▶ **Dining Area**
Seats approximately 80 people
- ▶ **Ablution Block**
Ladies and Men's Toilets/Showers
Disabled Toilet/Shower

MARAE PROVIDES:

- ▶ All cutlery, crockery, cooking utensils, pots, microwave, stove, walk in chiller, freezer, tea towels, tables and chairs, mattresses, linen, pillows, rubbish bins and food scraps bucket.
- ▶ Vacuum cleaner and two sets cleaning equipment-one for the kitchen & one for the toilets

YOU PROVIDE:

- ▶ Disinfectant, detergent, food supplies, blankets and toilet paper.

MARAE RULES and CONDITIONS:

- ▶ Shoes are NOT permitted to be worn in the Wharenuui.
- ▶ Eating and Drinking is NOT permitted in the Wharenuui.
- ▶ Once your visit is over, a condition of hireage is that you leave the Marae complex clean and tidy, with all mattresses stored away and rubbish taken to the skip on the back field.
- ▶ Soiled tea towels are to be bundled and left in the kitchen for collection.