


TE TOKA WHAKAKOTAHĪ

BAY OF ISLANDS COLLEGE
KAWAKAWA



COMPLEX

MA1 - WHARENUI
"Te Toka Whakakotahi"

MA2 - WHAREKAI
Dining Room /Teaching Space

MA3 - CLASSROOM
Teaching Space

*We **WELCOME** Guests and Visitors to our Marae and ask that you look after it and enjoy your stay here.*

No reira, nau mai, piki mai, haere mai.

**TE TOKA WHAKAKOTAHĪ
 MARAE**

1 – 9 Derrick Road
 PO Box 58
 Kawakawa 0243
 BAY OF ISLANDS

***Please contact in
 the first instance***

Matua Wimutu TeWhiu
 Head of Maori Department
 BAY OF ISLANDS COLLEGE

**A/Hrs (09) 402 6709
 021 210 4688**

**Tel (09) 404 1055
 Fax (09) 404 1048**

MARAE HIREAGE COSTS

Day Hire:	\$ 30.00
Evening Hire:	\$ 40.00
Overnight Hire:	\$ 10.00 Per person Per night

There is a flat hire fee for persons of all ages of \$10 per person, per night. This is the non-catering hire fee.

Catering Hire: (to be negotiated)

If catering is required, these arrangements must be made, at the time of your booking.

Deposit: \$50.00

The deposit is required to secure your booking. This must be received at least two weeks prior to your arrival.

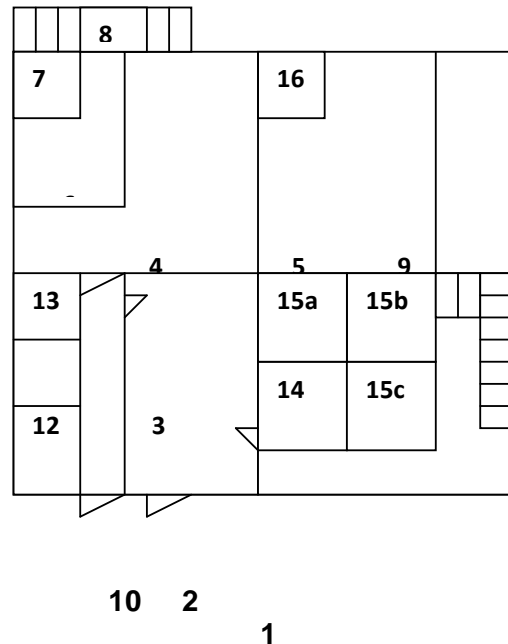
Full Payment: (Before Departure)

Payment in full is to be received (less your deposit) before departure.

TE TOKA WHAKAKOTAHI MARAE

is a non-alcohol and
non-smoking environment.

MARAE LAY-OUT



- 1 **PARKING**
- 2 **MARAE ATEA** (Front of Complex)
- 3 **WHARENUI** (Main House)
- 4 **WHAREKAI** (Dining Room)
- 5 **CLASSROOM**
- 6 **KITCHEN**
- 7 **WALK IN CHILLER**
- 8 **REAR EXIT**
- 9 **BALCONY EXIT**
- 10 **CORRIDOR ENTRY / EXIT**
- 11 **MENS W.C & SHOWERS**
- 12 **DISABLED W.C. & SHOWER**
- 13 **LADIES W.C. & SHOWERS**
- 14 **MATTRESS STORAGE**
- 15 **MAORI DEPARTMENT OFFICES**
(15 a, b, c)
- 16 **TELEVISION & VIDEO**

- ▶ **One Main Sleeping House**
Sleeps approximately 60 people
- ▶ **Dining Area**
Seats approximately 80 people
- ▶ **Ablution Block**
Ladies and Men's Toilets/Showers
Disabled Toilet/Shower

MARAE PROVIDES:

- ▶ All Cutlery, Crockery, Cooking Utensils, Pots, one Stove, Walk In Chiller, Freezer, Tea Towels, Tables and Chairs, Mattresses, Pillows, Rubbish Bins.
- ▶ Vacuum Cleaner and Two Cleaning Equipment Sets (one for the kitchen & one for the toilets).

YOU PROVIDE:

- ▶ Disinfectant, Detergent, Food Supplies, Linen and Blankets.

MARAE RULES and CONDITIONS:

- ▶ Shoes are NOT permitted to be worn in the Wharenuui.
- ▶ Eating and Drinking is NOT permitted in the Wharenuui.
- ▶ Once your visit is over, a condition of hireage is that you leave the Marae complex clean and tidy, with all mattresses stored away and rubbish taken to the skip on the back field.
- ▶ Soiled tea towels are to be bundled and left in the kitchen for collection.